

# ZETA 170

# ZETA 200

# ZETA 170

Max.: 170 l/min - 45 GPM · 20 bar - 290 PSI · 550 RPM

Max.: 198 l/min - 53 GPM · 20 bar - 290 PSI · 550 RPM

**TS 2C** ZETA 170 cod. 846700  
ZETA 200 cod. 849700

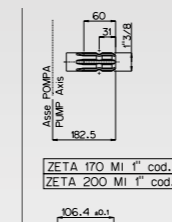


Membrane **GREENTECH** di serie  
**GREENTECH** diaphragm as standard  
cod. 090361

MOD.	RPM	0 bar / 0 PSI				5 bar / 72 PSI				10 bar / 145 PSI				15 bar / 217 PSI				20 bar / 290 PSI				Peso Weight	
		Portata Flow rate		Potenza Power		Portata Flow rate		Potenza Power		Portata Flow rate		Potenza Power		Portata Flow rate		Potenza Power		Portata Flow rate		Potenza Power			
		l/min	GPM	HP	kW	l/min	GPM	HP	kW	l/min	GPM	HP	kW	l/min	GPM	HP	kW	l/min	GPM	HP	kW	Kg	lb
ZETA 170	400	125.9	33.3	1.3	0.9	121.0	32.0	1.6	1.1	120.3	31.8	3.1	2.3	119.6	31.6	4.6	3.4	118.9	31.4	6.1	4.5	24.0	52.9
	450	140.6	37.1	1.4	1.0	135.7	35.9	1.7	1.3	135.0	35.7	3.5	2.5	134.3	35.5	5.2	3.8	133.6	35.3	6.9	5.0		
	500	155.3	41.0	1.6	1.1	150.4	39.7	1.9	1.4	149.7	39.6	3.8	2.8	149.0	39.4	5.7	4.2	148.3	39.2	7.6	5.6		
	550	170.0	45.0	1.7	1.2	165.1	43.6	2.1	1.6	164.4	43.4	4.2	3.1	163.7	43.2	6.3	4.6	163.0	43.1	8.4	6.1		
ZETA 200	400	145.8	38.5	1.5	1.1	140.9	37.2	1.8	1.3	140.2	37.0	3.6	2.6	139.5	36.9	5.4	3.9	138.8	36.7	7.1	5.2	26.0	57.3
	450	163.2	43.1	1.6	1.2	158.3	41.8	2.0	1.5	157.6	41.6	4.0	3.0	156.9	41.5	6.0	4.4	156.2	41.3	8.0	5.9		
	500	180.6	47.7	1.8	1.3	175.7	46.4	2.3	1.7	175.0	46.2	4.5	3.3	174.3	46.1	6.7	4.9	173.6	45.9	8.9	6.5		
	550	198.0	53.0	2.0	1.5	193.1	51.0	2.5	1.8	192.4	50.8	4.9	3.6	191.7	50.6	7.4	5.4	191.0	50.5	9.8	7.2		

## Versioni Versions

**1C** ZETA 170 cod. 844500



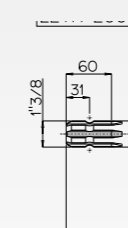
## Applicazioni Shaft adaptors

Applicazioni motori idraulici  
Shaft adaptors for hydraulic motor



MI  
vedi pag 92 see page 92

**TS 2C** ZETA 170 cod. 846700-ZETA 200 cod. 849700



Applicazioni motori idraulici  
Shaft adaptors for hydraulic motor



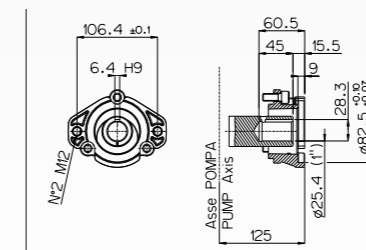
MI Δ  
vedi pag 92 see page 92

Moltiplicatore  
Multiplier



MTP 381 Δ  
vedi pag 90 see page 90

**MI-1"** ZETA 170 cod. 844400-ZETA 200 cod. 842000



## Gruppi regolazione pressione Pressure control units

**VRG 400**



vedi pag. 82 see page 82

