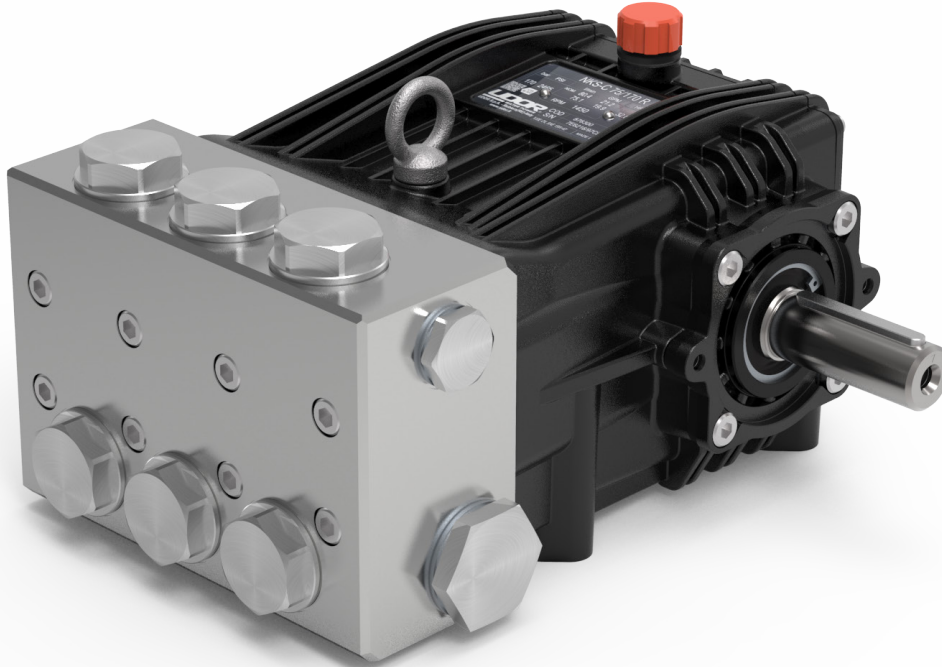


NKS

AISI 316L



RPM	CODICE CODE	MODELLO MODEL	PORTATA FLOW				PRESSIONE PRESSURE		POTENZA POWER		PESO WEIGHT	PRESA DI FORZA SHAFT TYPE
			NOM.				bar	PSI	HP	kW		
			l/min	GPM	l/min	GPM						
1450	876300	NKS-C 75/170 R	80.4	21.2	75.1	19.9	170	2465	32.8	24.4	30.0	R - Albero MASCHIO 30 mm DX R - MALE Shaft 30 mm RIGHT
	876400	NKS-C 85/170 R	91.1	24.1	85.2	22.5	170	2465	37.1	27.7	30.0	
	876500	NKS-C 100/150 R	104.5	27.6	100.0	26.4	150	2175	38.4	28.6	30.0	

Tutti i modelli di POMPE sono disponibili con Presa di Forza Sinistra (L). Esempio : NKS-C 75/170 L

All models of PUMPS are available with Left P.T.O. Shaft (L). Example : NKS-C 75/170 L

Dimensioni d'ingombro (mm) - Overall Dimensions (mm)

