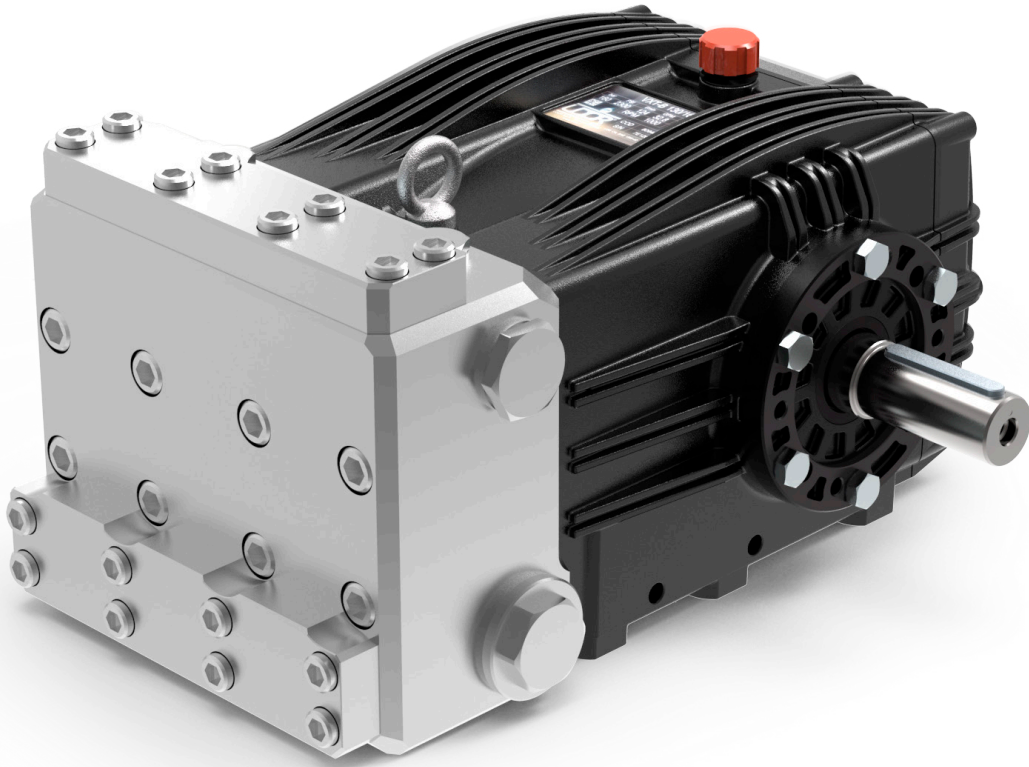


VXS

AISI 316L



RPM	CODICE CODE	MODELLO MODEL	PORTATA FLOW				PRESSIONE PRESSURE		POTENZA POWER		PESO WEIGHT	PRESA DI FORZA SHAFT TYPE
			NOM.				bar	PSI	HP	kW		
			l/min	GPM	l/min	GPM						
1000	818800	VXS-B 100/200 R	101.3	26.8	98.0	25.9	200	2900	50.3	37.5	68.0	R - Albero MASCHIO 35 mm DX R - MALE Shaft 35 mm RIGHT
	818900	VXS-B 130/160 R	128.3	33.9	124.0	32.8	160	2320	50.9	38.0	68.0	
	819000	VXS-B 160/130 R	158.3	41.8	155.0	41.0	130	1885	51.7	38.6	68.0	

Tutti i modelli di POMPE sono disponibili con Presa di Forza Sinistra (L). Esempio : VXS-B 100/200 L

All models of PUMPS are available with Left P.T.O. Shaft (L). Example : VXS-B 100/200 L

Dimensioni d'ingombro (mm) - Overall Dimensions (mm)

